

LECTURE SERIES



Designing Inclusive and Safe University Environments

A Framework for Supporting Ukrainian Students Coping with Loss and Trauma



Co-funded by
the European Union

Contents

01 Introduction
From Individual to Institutional Level

02 Psychological Safety
Understanding the Core Concept

03 Three Levels of Design
Policies, Classroom & Spaces

04 Language Strategies
Communication for Inclusion

05 Training & Competence
Building Institutional Capacity

06 Research Evidence
UkraStud Findings

07 Conclusion
A Continuous Commitment to Inclusion



From Individual to Institutional Level

Building on our previous exploration of creative and reflective practices for individual healing, we now shift focus to the institutional level —how universities can be designed to be truly inclusive and safe for all students.

This is particularly critical for Ukrainian students who have experienced war, displacement, or grief , as their recovery and academic success depend fundamentally on feeling a sense of belonging and safety.

What is an Inclusive University?



Empathy

Understanding student
experiences



Fairness

Equitable policies and
practices



Respect

Valuing every individual

💡 Key Insight: An inclusive environment is more than a diverse campus —it's a culture where every student feels they belong.

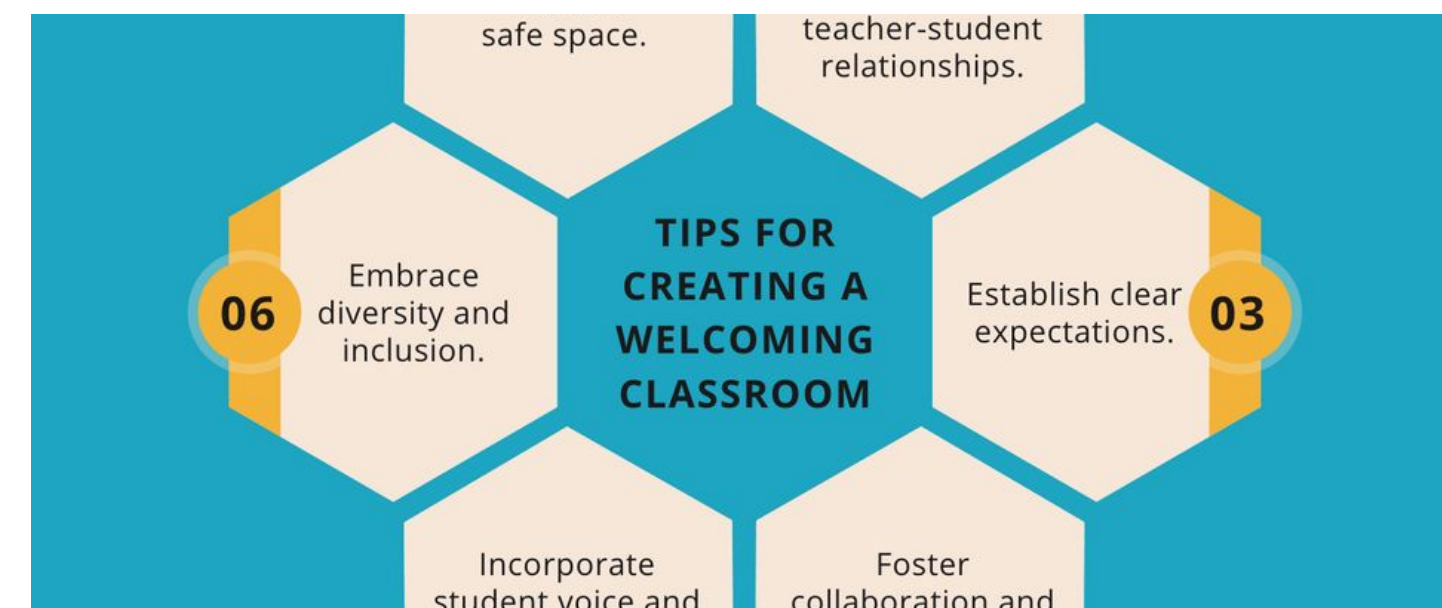




Understanding Psychological Safety

Amy Edmondson's Definition

"A shared belief held by members of a team that the team is safe for interpersonal risk-taking."



In the University Context



Freedom to Express

Students can share opinions and emotions without fear of humiliation or punishment



Learning from Mistakes

Mistakes are seen as learning opportunities, not grounds for judgment



Vulnerability as Strength

When vulnerability is met with respect, learning and well-being flourish together

Why It Matters



Enhanced Learning

Students engage more deeply when they feel safe



Innovation & Creativity

Safe spaces foster creative problem-solving



Well-being

Psychological safety reduces anxiety and stress



Retention

Students stay when they feel they belong



Level 1: Institutional Policies

The Foundation of Inclusion

Clear, transparent policies signal to students that the institution is committed to their well-being and success.

1

Clear Policy Framework

Adopt explicit policies on inclusion, anti-discrimination, and mental health support that are easily accessible to all students.

2

Accessible Counseling Services

Provide mental health support that is easy to access, culturally sensitive, and available in multiple languages.

3

Flexibility for Students in Crisis

Offer deadline extensions, alternative assessment methods, and other accommodations for students experiencing trauma or crisis.



Visible Communication

When institutional care is transparent and visible, students feel less isolated and more empowered to seek help.



Clear messaging



Multi-language support



Wayfinding resources



Regular outreach



Level 2: Classroom Culture

The Educator's Role

Educators play a central role in setting the emotional tone of the classroom. Simple habits make a significant difference.



Practical Habits for Inclusive Teaching



Greet Students by Name

Personal recognition creates immediate connection and signals that each student matters.



Acknowledge Effort Over Perfection

Celebrate growth, resilience, and progress rather than focusing solely on outcomes.



Promote Collaboration

Foster teamwork and peer support instead of excessive competition.



Use Culturally Diverse Materials

Include content that reflects cultural diversity and actively avoids stereotypes.

“ Remember: The classroom is where students spend most of their time. A supportive culture here ripples throughout their entire university experience.



Level 3: Physical and Social Spaces

Creating Safe Spaces

Physical and social environments directly impact how safe and welcome students feel on campus.



Create "Safe Corners"

Designate quiet areas on campus where students can rest, reflect, or talk privately. These spaces should be easily accessible and clearly marked.



Display Supportive Messages

Post welcoming and supportive messages in both English and Ukrainian throughout campus buildings, libraries, and common areas.

Community-Building Events

Organize events that emphasize solidarity and shared humanity :



Remembrance Days

Honor collective experiences



Intercultural Evenings

Celebrate diversity



Volunteer Initiatives

Build mutual care networks

Impact

These experiences reduce stigma and promote mutual care , creating a campus culture where students support one another.



Language and Communication Strategies

Modeling Inclusivity Through Language

Tutors and staff model inclusivity through their behavior and language, shaping how students perceive themselves and their place in the community.

The Critical Shift

"What's wrong with you?"

Focus on judgment



"What happened to you?"

Focus on understanding

This simple change shifts the conversation from blame to empathy, opening doors for genuine support and connection.

Additional Inclusive Practices



Gender-Neutral Language

Use inclusive pronouns and avoid assumptions about gender identity.



Acknowledge Diversity

Recognize and validate the wide range of student experiences and backgrounds.




Avoid Assumptions

Don't presume knowledge of a student's background, experiences, or needs.



Active Listening

Truly hear what students are saying without rushing to solutions.

 Key Principle: Language shapes reality. The words we choose either build bridges or create barriers.

Training and Cultural Competence

Institutional Training Requirements

Universities must integrate training in cultural competence and trauma awareness for all academic and administrative staff.

Training Components

- 1** **Understanding Trauma**
Learn how trauma affects behavior, learning, and relationships.
- 2** **Cultural Humility**
Develop awareness of one's own cultural lens and biases.
- 3** **Recognizing Signs**
Identify when students may be struggling and need support.
- 4** **Appropriate Response**
Know how to respond compassionately and refer to resources.



Who Should Be Trained?



Professors



Administrators



Librarians



Support Staff

Everyone who interacts with students should understand trauma-informed principles.

Outcome: When the entire institution understands trauma, it becomes more compassionate and effective .



UkraStud Findings: The Power of Inclusion

Research Confirmation

Recent findings from the UkraStud research confirm how essential inclusive and safe environments are for Ukrainian students navigating trauma, displacement, and uncertainty.

Key Research Findings



Strongest Predictor of Well-being

Satisfaction with university inclusion policies is one of the strongest predictors of student well-being, influencing flourishing, social connectedness, and self-efficacy.



Positive Interactions Prevail

Students report significantly more positive than negative interactions on campus, fostering a sense of belonging and openness toward the host society.

European Identification

Importantly, positive interpersonal experiences also strengthen students':



Identification with Europe



Favorable attitudes toward European communities

Both directly and indirectly through positive experiences

Research Conclusion

These insights underscore that inclusive university environments are not symbolic—they are measurable protective factors that directly support psychological recovery, resilience, and long-term integration for Ukrainian students.





A Continuous Commitment

Inclusion is Not a One-Time Project

Building inclusive and safe university environments requires ongoing dedication, adaptation, and commitment from the entire institution.

Every Action Communicates



Every Welcoming Gesture

A smile, a greeting, an open door



Every Supportive Policy

Flexibility, accommodations, resources



Every Safe Space

Physical and emotional sanctuaries

These all communicate:
"You belong here. You are safe here."

The Three Levels at a Glance



1 Institutional Policies

Clear frameworks, accessible support, flexibility



2 Classroom Culture

Personal recognition, effort over perfection, collaboration



3 Physical & Social Spaces

Safe corners, supportive messages, community events

Looking Ahead

In our next and final lecture, we'll explore institutional strategies for crisis preparedness and mental health promotion —how universities can sustain all these efforts in a long-term, systemic way.

Every Student Deserves to Belong

Building inclusive and safe university environments is not just an ideal—
it is a measurable protective factor that directly supports
psychological recovery, resilience, and long-term integration
for all students, especially those who have experienced trauma.



Safety

Physical and psychological
protection



Belonging

Connection and community



Growth

Recovery and flourishing